



Ktunaxa Lands & Resources Newsletter and Updates

Nakta?suk (January) 2016

?at tuk?u? tapmi?kuku?ni

In January, after a chinook, layers of ice forms with water in between

Ki?suk Kyukyit ?ukin Makut

The Lands and Resources Department would like to wish everyone a Happy New Year. We enjoyed keeping you all updated over this past year and look forward to keeping you up to date this upcoming year. Don't forget to check out our monthly Ktunaxa Word Search and also our Ktunaxa Jeopardy question where you could win a \$25.00 Gift Certificate. Also, if you have any suggestions on what else you would like to hear about please send it to us at: nnicholas@ktunaxa.org

Bull River Fisher's Meeting Focus Group

***Have you or your family ever fished the upper Bull River???**

BC Hydro has made changes to the Aberfeldie Dam on the Bull River. As part of those changes, it has committed to providing fish habitat improvements to compensate for ongoing impacts from the dam operations, especially above the dam and for Westslope Cutthroat trout and Mountain Whitefish.

KNC is holding dinner workshops with Ktunaxa citizens who fish the Bull River - above and below the dam - to gather KNC knowledge of the river, and inform planning of fisheries habitat improvements that will be useful to both fish and Ktunaxa fishers. The dinner workshops will be held at Tobacco

Plains and St. Mary's.

Tuesday, January 26th 5:30 - 8:30 at St. Mary's Board Room Wednesday January 27th 5:30 - 8:30 at Tobacco Plains Band Hall.

The workshops will focus on KNC knowledge, and ask questions like:

- How have the Bull River and the fish living in it changed over time?
- Where are the priority areas on the upper Bull River for Westslope Cutthroat trout, Mountain Whitefish, and for Ktunaxa fishing?
- What are the best options and locations for improving fish habitat in the upper river?
- How can the work be done so that it supports KNC citizens to fish the river?
- Beyond catching fish, what other kinds of Ktunaxa activities and values does fishing in the Bull River support?
- What would reduced numbers of fish in the Bull River mean to you, your children, and the practice of Ktunaxa rights?

Lands and Resources

Sector Council:

- Chair - Sandra Luke
Lower Kootenay
- Jim Whitehead
?aqam
- Jason Gravelle
Tobacco Plains
- Lorne Shovar
?akisqnuq

Lands and Resources Staff:

- **Ray Warden**, Director
- Lands & Resources Stewardship Assistants: **Chad Luke** (Lower Kootenay), **Nevada Nicholas** (Akisqnuq), **Bonnie Harvey** (Aqam) **Dan Gravelle** (Tobacco Plains) ,
- **Kerri Garner**, Manager
Lands Stewardship
- **Denise Walker**, Executive Assistant
- **Nicole Kapell**, Environment & Archaeological Stewardship Manager
- **Denine Milner**, Strategic Initiatives Coordinator
- **Craig Paskin**, Manager
Policy and Planning
- **Jose Galdamez**, GIS Technician
- **Alison Burton**, Coal Regulatory Coordinator
- **Danielle Gravelle**, Lands Guardian

Columbia Mountains Institute hosts the Environmental and Social Assessment Forum

On February 23-24, 2016 at the Collage of the Rockies in Cranbrook, BC the Columbia Mountains Institute will host a Environmental and Social Assessment Forum. This will be a unique two day modular event where participants can learn how to work through the process from either a stakeholder or proponent position. Attendees will be able to choose from five different seminars to learn the tools required to successfully engage in or navigate through the environmental and social assessment process. The purpose of this forum is to provide attendees with practical "hands-on" experience and skills. Five seminars will be offered over two days.

Seminars options are:

- ◆ A guide for proponents to the Federal environ-

mental assessment processes.

- ◆ A guide for proponents to the BC environmental assessment process.
- ◆ A guide for First Nations, stakeholders, and the general public on the Federal environmental assessment process.
- ◆ A guide for First Nations, stakeholders, and the general public on the BC environmental assessment process.
- ◆ Everyone's guide to social assessment in environmental assessment processes.

The panel discussion will involve people from different perspectives (e.g. local, provincial and federal government, stakeholder groups, NGO's, First Nations, the private sector) and will address the question "How do we improve the process of environmental and social

assessment?"

The keynote speaker will be Cam Owens who will speak to: "Politics, Geography and Environmental Assessment: Reflections on the struggle over the Jumbo Valley.

A screening of the film "Jumbo Wild" will also take place and is open to the public. Doors open at 6:30pm at the Collage of the Rockies. Tickets will be available for a small fee.

Registration is now open until February 5th 2016.

CMI Member: \$220.00

Non Member: \$270.00

Student: \$160.00

Day One Only: \$210.00

To register go to:

<http://cmiae.org/event/enviroandsocialassessment/>

Lands and Resources - Ktunaxa Jeopardy YOU COULD WIN!!

Question: Found near the Kimberly Ski Hill and near Goatfel. This rock was used by Ktunaxa 10,000 years ago to make spear points for hunting mega fauna (large or giant animals).

To submit your answer: Go to our Ktunaxa Lands and Resources Facebook Page and private message us your answer or submit your answer by emailing nnicholas@ktunaxa.org and a random winner will be awarded a \$25.00 gift card. The deadline for submission is January 29th 2016.

Elk Population Declines in the Dutch-Findlay Area

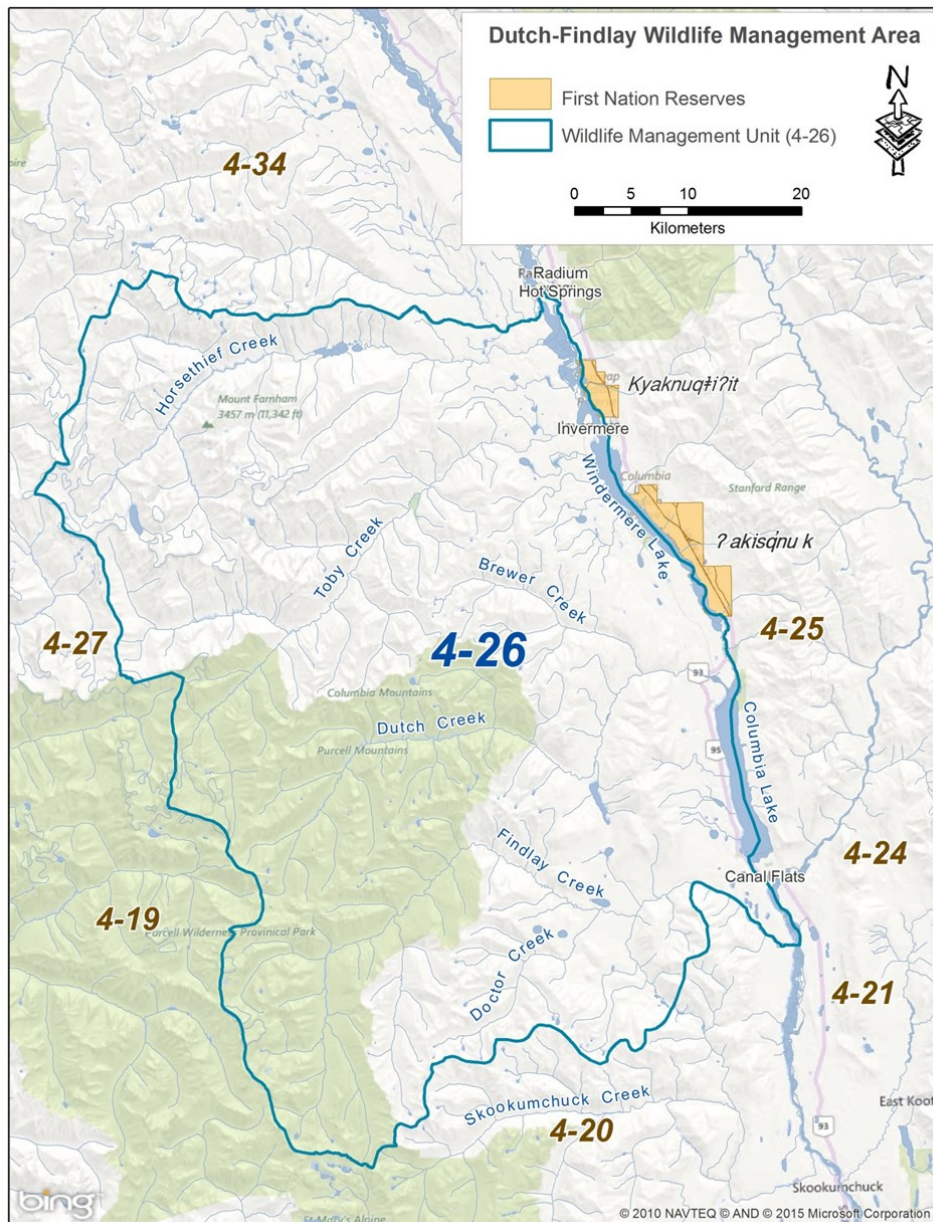
The elk population in the Dutch-Findlay Creek area has seen a dramatic decline of 23% between 2011 and 2013 despite hunting restrictions for the area.

To help the elk population recovery in this area, the BC Government has implemented hunting restrictions to alleviate and help the population become stable by reducing the number of Limited Entry hunting permits and by closing General Open Season within

the Wildlife Management Unit 4-26 for spike bulls and cow/calk elk (archery and rifle seasons). To maintain a healthy sustainable elk population, cow elk survival rate must be at least 25 calves per 100 cows. The current levels within the Dutch-Findlay area are approximate 14 calves to 100 cows, which poses a significant impact on future elk population within this area. The Kootenay Elk Management Plan calls for at least 20 bulls per

100 cows following hunting season to ensure successful breeding. Since 2001, the Dutch-Findlay levels are roughly 12-13 bulls per 100 cows which are considerably lower than the surrounding areas.

No one wants to see the demise of Elk herds anywhere in the region. Let's pitch in and do our part and be considerate towards the long-term welfare of the Dutch – Findlay Elk herds when choosing an area to hunt.



You're Invited!

Ktunaxa Nation Council Title & Rights Workshop

February 15th & 16th

10:00 AM to 4:00 PM

Cranbrook - Location To Be Determined

KNC Lands and Resources Sector is sponsoring a two day workshop on Aboriginal Title and Rights hosted by KNC Legal Counsel. The intended audience of this workshop is KNC and Ktunaxa Community Staff as well as any leadership and citizens who are interested in knowing more.

Day One: An introduction to Aboriginal Title and Rights followed by discussion of current case law, evidence needed to demonstrate title and rights, delegation of duty to consult, and title and rights as they relate to land and resource decisions on public and private land.

Day Two: A focus on questions submitted to our Legal Counsel prior to the workshop that pertain to the work KNC and Community staff do. Questions could include: Title and rights in a Treaty vs non-Treaty environment? How do Title and Rights case law influence Shared Decision Making? What is the scale and timing of Consent?

Lunch will be provided. No travel and honoraria are available.

To register, contact Denise Walker
(dwalker@ktunaxa.org, 250-489-2464 ext 3120)

For more information or to submit questions, contact Nicole Kapell
(njkapell@ktunaxa.org, 250-489-2464 ext 3123)



Ktunaxa Word Search

- | | |
|--------------------|------------------------|
| Axe - ?aqutaʔ | Ball - Watkum |
| Bicycle - Kwanikiʔ | Can Opener - Kɕuxu?muʔ |
| Glove - ?a:qatin | Keys - KaqtKu?muʔ |
| Mittens - Paʔya | Radio - Namʔi?it |
| Sweater - Kitiq | Pliers - Kitxnamɕi |

(words can be found forward, backwards and diagonally)

k	ɕ	u	x	u	?	m	u	ʔ	?	.
i	n	q'	w	p	w	a	q	x	n	ʔ
t'	i	.	x	K'	a	ʔ	ɕ	n	s	u
x	t	q'	ʔ	.	t'	w	p	a	y	m
n	a	s	p	?	k	x	h	m	u	?
a	q'	?	a	q	u	t	a	ʔ	i	u
m	.	h	ʔ	u	m	n	x	i	n	k'
ɕ	a	w	y	k'	p	a	x	?	m	t
i	?	x	a	s	y	ɕ'	m	i	w	q
k	w	a	n	i	k	i	ʔ	t	x	a
.	ɕ	k	m	x	w	q'	i	t	i	K'

January:

Bull River Fisher's Meeting and Focus Group (More information on page 1)

January 26th 5:30—8:30 pm at the Aqam Boardroom—Dinner provided

January 27th 5:30—8:30 pm at the Tobacco Plains Band Hall—Dinner Provided

February:

February 23-24: Environmental and Social Assessment Forum located at COTR (more information on page 2).

Contact us at:

Lands and Resources KNGB:

1-250-489-2464

Ray Warden - Ext. 3121

Denise Walker - Ext. 3120

Nicole Kapell - Ext. 3123

Denine Milner - Ext. 3125

Craig Paskin - Ext. 3124

Jose Galdamez - Ext. 3122

Kerri Garner - Ext. 3115

Alison Burton - Ext. 3190

Danielle Gravelle - Ext. 4026

Community Lands and Resources Stewardship Assistants (LRSA's):

Bonnie Harvey (?aqam)

1-250-426-5717 Ext. 3522

Chad Luke (Lower Kootenay)

1-250-428-7960

Dan Gravelle (Tobacco Plains)

1-250-887-3461 Ext. 3412

Nevada Nicholas (?akisqnuK)

1-250-342-6301 Ext. 3815

The Mandate of the Ktunaxa Lands and Resources Agency is to ensure that the lands and resources within the Ktunaxa Territory are effectively managed and protected for the benefits of the citizens, communities and government of the Ktunaxa Nation.

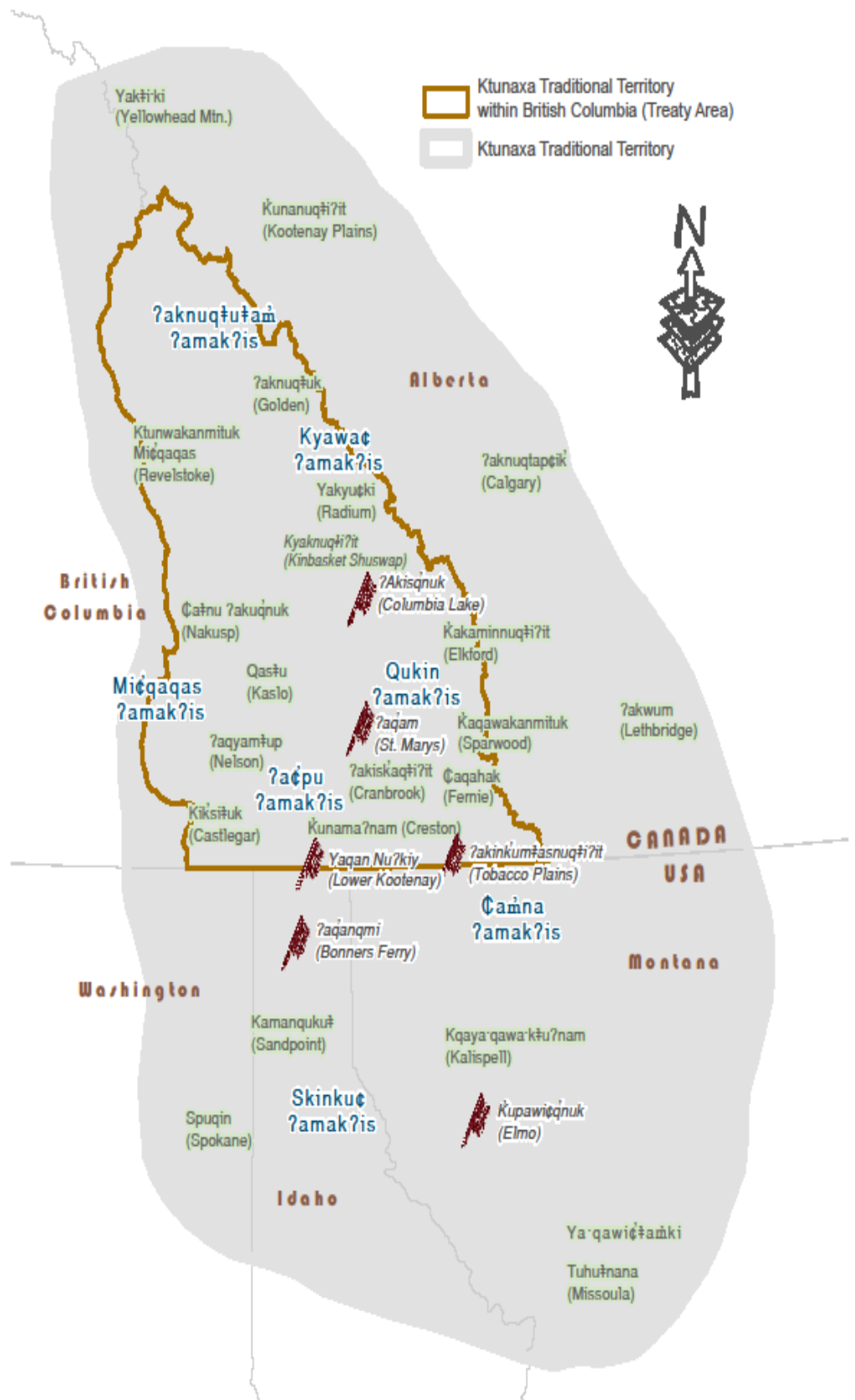
- Lands Sector Mandate

For the latest news and events please visit us at:

www.ktunaxa.org

Like us on Facebook:

Ktunaxa Nation Lands and Resources



Chad Luke is encouraging everyone to please add Lower Kootenay (Stewardship Assistant) as a friend on Facebook to keep updated on what's happening in the Creston area.