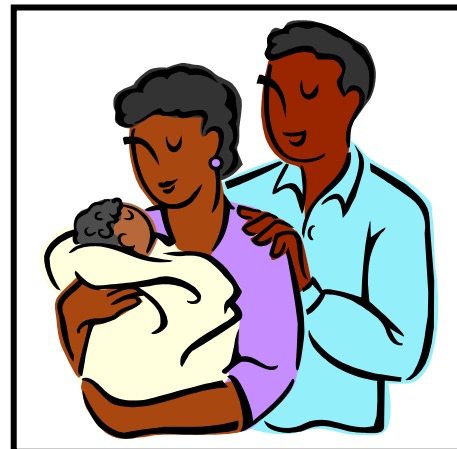


# Community Healing and Intervention Program Newsletter: Autumn 2003

**Ki'su'k Kyukyit!** Welcome to the Autumn 2003 edition of the Community Healing and Intervention Program (CHIP) Newsletter.

We have a lot of exciting information in this newsletter. More and more people are becoming interested in Fetal Alcohol Spectrum Disorder (FASD). In the East Kootenay region, there is a growing community of people who are taking **small action steps** to support people with FASD and to prevent FASD in the future. In addition, two well-known TV programs are educating millions of viewers worldwide about FASD!

Thank you for reading this newsletter, and thank you for the work that **you** do regarding FASD!



## **Tune into “Law & Order: Special Victims Unit” on Tuesday Nov. 4/03 to see an Episode re: FASD!**

- Two well-known TV shows are providing accurate information re: FASD
- On Tuesday evening, November 4th, we hope you'll tune in to watch the NBC television program Law & Order: Special Victims Unit.
- When you do, you'll see a storyline focusing on Fetal Alcohol Spectrum Disorder (FASD) and featuring performances by two special young ladies with FAS: Karli Schridder of Olney, Maryland, and Katherine Reynolds of Lake View, New York.

# Community Healing and Intervention Program

## Newsletter: Autumn 2003

- The episode is the result of collaboration among Law & Order Executive Producer Dr. Neal Baer, who is a NOFAS Board member, Patrick Harbinson, Co-Executive Producer, and NOFAS National Spokeswoman Kathy Mitchell.
- In addition to Mariska Hargitay, who plays Detective Olivia Benson, and the all-star cast, the episode features a guest appearance by Josie Bissett, formerly of the television program Melrose Place, portraying the mother of a FAS child.
- Watch for NOFAS posters and the NOFAS logo in the television version of the NOFAS office which was recreated on the New York set!



### **TV Show from Britain Provides Info. About FASD**

- Coronation Street is the most-watched TV show on British TV with about 12 million viewers
- A recent episode showed a pregnant mum was seen in a pub ordering a beer.
- Then the guy came in the pub and said "Don't you know that even the smallest amount of alcohol can have a seriously adverse effect on the unborn child?"

### **The FAS/E Support Network of BC has Moved**

- The FAS/E Support Network of BC has moved. Here is their up-to-date contact info.
- New address is: #108-17767 64<sup>th</sup> Ave., Surrey, BC, V3S 1Z2
- New phone number is: 604-576-9911
- New fax number is: 604-576-9112
- Same email: [info@fetalalcohol.com](mailto:info@fetalalcohol.com)

# Community Healing and Intervention Program Newsletter: Autumn 2003

## BC Vital Statistics— Gathering Data re: the Diagnosis of FASD

Based on information shared at the November, 2002 meeting of the Provincial FASD Consultation Group, B.C. Vital Statistics is now gathering data re: individuals who have a **formal diagnosis** re: FASD.

A formal diagnosis re: FASD should be conducted by a qualified, multi-disciplinary assessment team, for example, at Sunny Hill Health Centre for Children in Vancouver or Alberta Children's Hospital in Calgary. (For more information about assessment resources or the assessment process, contact CHIP for a copy of CHIP's assessment and diagnosis pamphlet.)

At this point, reporting FASD diagnoses is a **voluntary process**. The process is quite open in terms of who can call B.C. Vital Statistics to identify an individual who has a formal diagnosis re: FASD (e.g. parent/caregiver, public health nurse, social worker etc.). Of course, it is essential that any necessary consent forms be filled out prior to contacting B.C. Vital Statistics. If several people contact B.C. Vital Statistics re: the same individual who has a diagnosis re: FASD, B.C. Vital Statistics will only count the person once.

There are a number of possible benefits to B.C. Vital Statistics collecting information about individuals with formal FASD diagnoses:

- Provide data to advocate for increased FASD assessment services
- Provide data to advocate for funding and services to support individuals with FASD
- Increase awareness of FASD in B.C.

For more information about this initiative, feel free to contact the Community Healing and Intervention Program (CHIP) or Dr. Ian Rongve (Economist) with the B.C. Vital Statistics Agency (Ph. 250-952-2592).



# Community Healing and Intervention Program Newsletter: Autumn 2003



## **The Importance of Community Functions**

**By M. Jason Louie, CHIP staff**

For an individual affected by Fetal Alcohol Spectrum Disorder (FASD), finding a place in the community can be a difficult task. Feelings of isolation, alienation and loneliness can be quite common for individuals who are affected by prenatal exposure to alcohol.

Finding a place in a First Nation community is difficult for anyone. Many questions arise: Will I be accepted? Who will accept me? Will there be jealousy towards me?

Historically, everyone had a place in the community, from the youngest child to the eldest adult. We were all one people. Having a role in the community was necessary for our survival. Without those roles, I strongly believe that we would not be here today. One may have had the role of the Chief for a hunt. Another could have been the one to gather wood for fires. There was a job for everyone.

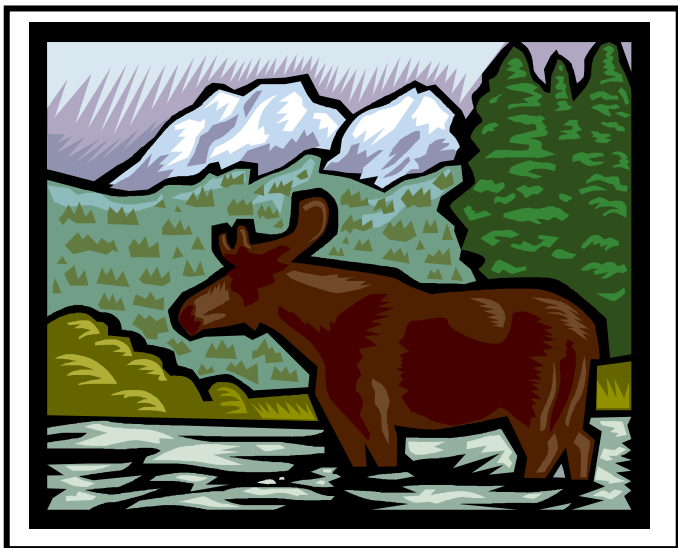
Sadly, today many of our communities are losing touch with this format of living. Many of our communities are forgetting this way of life. Some aspects of times past still exist within our Nation. In Lower Kootenay, many youth step forward to aid with a feast and various other gatherings. The young people become involved as a collective body. Fetal Alcohol Spectrum Disorder is erased for a moment. No longer is there the thought of "there's Bill who has FASD." Rather, the thoughts become "look at our kids working so hard together." During these gathering

# Community Healing and Intervention Program

## Newsletter: Autumn 2003

times, the feeling of belonging and acceptance is very apparent to all. What a beautiful sight and feeling it is.

If there is an upcoming event in your community such as a feast, DJ dance, sporting event, or pow wow, please keep in mind your next-door neighbour, your cousin, friend, uncle, or someone you may not have spoken to for a long time. The contributions that they can make to a function can be remarkable. I will always look to the past for answers with much pride because this gives me hope for the future.



### **Project Adamant Wilderness Experience:**

#### **A Possible FASD Resource**

- Project Adamant (PA) is a possible resource for youth (13-18 years old) who are affected by FASD
- Project Adamant operates a mobile wilderness program, serving at-risk youth (male and female) in the East Kootenay region (i.e., Golden to Cranbrook to Creston to the Elk Valley)
- From February to November, PA operates two trips a month, lasting from 5-7 days
- Wilderness activities include camping, hiking, over night backpacking, cross country skiing, and canoeing
- Youth may attend the program on a once a month basis for a year or longer, depending on the need
- Referrals can be made through PA's sponsors (Child Protection social workers and youth Justice probation officers); other concerned community members (e.g., parents, foster parents, school staff,

# Community Healing and Intervention Program Newsletter: Autumn 2003

counsellors, community agencies, police) also have the opportunity to refer youth to the program.

- The program is delivered free of cost by PA's sponsors to all youths who qualify for the service.
- Project Adamant's contact information is as follows:
- Ph/Fax: 250-344-2247
- Email: [info@projectadamant.com](mailto:info@projectadamant.com)
- Website: [www.projectadamant.com](http://www.projectadamant.com)

## On-Line Resources re: FASD

**1. The Clinical Practice Guidelines from the Alberta Medical Association re: FASD** have been quite popular resources. These resources are now available on-line.

Go to the Alberta Medical Association's website at: [www.albertadoctors.org](http://www.albertadoctors.org)

Click on the "Clinical Practice Guidelines" link at the bottom of the page, then click on the "Child Health" link. There are three pdf documents: preface, prevention, and diagnosis.

It is important to note that these documents use the Institute of Medicine diagnostic model rather than the University of Washington 4-digit diagnostic code. It is also important to remember that the FASD National Advisory Committee has drafted national guidelines re: the diagnosis of FASD. These draft guidelines have not yet been approved.

**2. "Fetal Alcohol Spectrum Disorder: A Strategic Plan for British Columbia"** is now available on-line.

The document is available at [www.mcf.gov.bc.ca/fasd/pdf/fasd\\_strategic\\_plan-final.pdf](http://www.mcf.gov.bc.ca/fasd/pdf/fasd_strategic_plan-final.pdf)

Any questions or comments regarding the strategic plan could be sent to Madi Mayfield who is the interim Provincial FASD Prevention Consultant. Madi's email is [madi.mayfield@gems3.gov.bc.ca](mailto:madi.mayfield@gems3.gov.bc.ca)

Madi is covering Anne Fuller's maternity leave until Anne's return in September, 2004.

**3. The webcast for 4<sup>th</sup> Annual Fetal Alcohol Canadian Expertise (FACE) Research Roundtable** is now available on the

# Community Healing and Intervention Program Newsletter: Autumn 2003

Knowledge TV website:

[www.knowledgenetwork.ca](http://www.knowledgenetwork.ca)

Click on the "Knowledge Tools" icon, and then click on the large FASD icon.

There are specific computer requirements for the webcast:

- Macromedia Flash Player 6
- High-speed internet connection
- Quick Time player
- 64 MB RAM
- Adobe Acrobat Reader
- Speakers

The 4<sup>th</sup> Annual FACE Research Roundtable was held on September 9, 2003 in Sherwood Park, Alberta.

**4. The Iceberg newsletter** has been a valuable resource for many years. The newsletter is now available **for free** at the Iceberg web site:

<http://www.FASiceberg.org/>

People with subscriptions will continue to receive a paper version of Iceberg until 1) your subscription runs out or 2) you email Iceberg at [iceberg\\_fas@yahoo.com](mailto:iceberg_fas@yahoo.com) saying you can now get it on-line and would like to donate the rest of your subscription money to Iceberg's operating costs.

## Fast Facts About CHIP

**Mandate:** To prevent prenatal exposure to alcohol and to provide holistic, culturally sensitive support services to Aboriginal children and Aboriginal youth who are affected by prenatal exposure to alcohol and who live in the East Kootenay region

### The CHIP Team:

John Barnes:

❖ Ph. 250-489-3373

Jason Louie:

❖ Ph. 250-428-9816

Lynnette Wray:

❖ Ph. 250-489-3373

Sue Bannatyne:

❖ Ph. 250-423-5041

Eleine Gordon:

❖ Ph. 250-489-3373

CHIP would like to thank the following organizations for their on-going support:

- ❖ Aboriginal Health Services of the Interior Health Authority of British Columbia for funding CHIP
- ❖ The Ktunaxa Kinbasket Tribal Council for administering CHIP
- ❖ The College of the Rockies for housing and maintaining CHIP's collection of FASD resources

**THANK YOU!**